



Monthly Newsletter



Welcome 1st years!

To all our new 1st years, GSA would like to extend a very warm welcome to you! It was so fun meeting many of you at Orientation last week and we are definitely looking forward to getting to know many of you throughout the upcoming year!

We hope you've settled in and are excited to start your classes and research projects! If you need help with anything don't be afraid to email us (gsa@jhmi.edu) or others in your program! We are always here to help!

GSA would also like to extend an invitation to you to join our [Hopkins Group Page](#) if you haven't done so already. Here you will have access to all SOM exclusive content from GSA and be able to register to our many events around campus!

Feeling a little lost? We have put together a [list of resources](#) just for you! We encourage you to check it out when you have a moment!

Enjoy this month's newsletter!

GSA Director of Media and Public Relations

In this Newsletter

Monthly Welcome Message

Upcoming GSA Deadlines

GSA's Top News of the Month

Upcoming GSA Events

Internal JHU Events

Student Opportunities

Links to Important Resources

Upcoming Deadlines

New Student Group Applications

Are you interested in forming a new student group on campus and want to obtain funding from the GSA for your group events and activities? **The application deadline for GSA recognition is Sept 15th.** Make sure to read our constitution for student group requirements prior to submitting your documents! **All information and forms can be found on our website!**

Returning student groups, if you missed the July 30 deadline for returning group applications you will need to re-register as a "new" student group!

October Travel Awards

Do you have a conference coming up and would like some financial assistance for your travel? Make sure you apply for the Fall Travel Award! **Applications are due October 15th!**

The Fall Application cycle covers conference travel between the dates of **October 15th and January 14th.**

Go to our website to apply!



Sep Student Spotlight

Our September Student Spotlight link is live! Have you or a peer recently achieved something amazing? Let us know! You could win **a \$25 gift card to Amazon or Target** and get featured on our website and socials!

Nominations are open on Sept 16th. Nominations are due on Sept 27th.

Info can be found on our website!



Event Features?

Would you like your groups event to be featured in our Newsletter?

Email us at gsa@jhmi.edu



Mental Health Resources

Mental Health Services

The [Behavioral Health Crisis Support Team](#) (BHCST) can be reached 24 hours a day, 7 days a week at **410-516-WELL** (9355).

[TimelyCare TalkNow](#) is an on-demand telehealth service that connects you to a clinician for support, any time you need it. This service is available in all 50 states and in international locations that permit web access.

You can also reach licensed clinicians by telephone, after hours and any other time our offices are closed by calling [410-516-3311](tel:410-516-3311).

More information can be found [here](#).



Sexual Misconduct and Discrimination

The **Office of Institutional Equity (OIE) at Johns Hopkins University** oversees policies related to sexual misconduct, discrimination, and harassment. The Sexual Misconduct policy outlines the university's commitment to addressing all forms of sexual and sex-based misconduct, including reporting procedures, support resources, and prevention efforts. The Discrimination and Harassment policy ensures that all members of the community are protected from discriminatory practices and harassment based on race, gender, disability, and other protected characteristics.

More information can be found [here](#).



GSA's Top News of the Month

Past Newsletters

Don't miss another Newsletter again! Did you know that GSA keeps a record of all our past Newsletters in our Hopkins Group Page? You can find them linked here!

1st Years! Last months' Newsletter highlighted some important information that would be beneficial for you too! Take a moment to read through and learn about some great resources at Hopkins!

New Financial Form

We have launched a new all-in-one financial form for getting reimbursement! You can find the information on our website. **All purchase requests need to be reviewed and approved by GSA before placing the orders.**

Travel Award **reimbursement**.
Reimbursement for **student groups**.

Upcoming GSA Events

GSA General Body Meeting

Our General Body Meetings will take place **on the first Wednesday of each month at 4:30pm**. Meetings will be conducted in mixed formats, including happy hours and regular meetings.

Keep an eye out for our email updates with details about each session. Everyone is welcome to join us! These meetings are a fantastic opportunity to learn about upcoming events from the GSA and connect with your program representatives.

We look forward to seeing you there!



Harvest Happy Hour

All are welcome, we will have food, beverages, and pumpkin painting! Please RSVP on [Hopkins Groups](#).

Time: 4-7pm, September 12th
Location: PCTB Courtyard



Ice Cream Social with Thread

Join us on an Ice Cream Social where we will have Taharka and play fun games! Register [here!](#)

Time: 11am-2pm, September 17th
Location: PCTB Courtyard



Hispanic Heritage Month Social

Hispanic heritage month is celebrated from September 15th to October 15th. GSA is planning a social and networking event with the Office of Diversity and Inclusion.

More information is coming! Stay tuned!

Health Insurance Info Session

Many graduate students want to know more about health insurance. We hear you! The JHU Benefits Office will be presenting the Health, Dental, and Vision benefits available to students.

Time: September 26th
Location: MRB G07 More details coming!

GSA is here to support you!

We're always ready to hear your voice. If there's anything on your mind, please don't hesitate to email us at gsa@jhmi.edu.

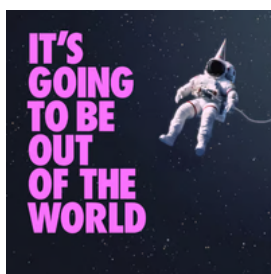




Opportunities for Students

Writing and Valuable Engagement (W.A.V.E)

Are you looking for a community to support your writing goals? Join the W.A.V.E. Writing Accountability Group hosted by the Doctoral and Postdoctoral Life Design with your doctoral and postdoctoral peers as you work on your next big writing project! W.A.V.E. is an informal environment to **connect with others working on writing projects of all kinds to discuss strategies, tips, and provide encouragement.**



Check out [here!](#)

AWIS Baltimore Fall Meeting: Sips N'Science

The Association for Women in Science (AWIS) Greater Baltimore Chapter will have their first event Sips N'Science at the new Chekerspot Brewing venue. Three outstanding women in STEM will give talks and there will be social events following it. AWIS supports the advancement of women in science, technology, engineering, and mathematics (STEM).

Register on [Eventbrite](#).



Time: 5-8pm, September 25th

Location: Checkerspot Brewing Company

Women Mentoring Whiting (WMW) Recruitment

Women Mentoring Whiting (WMW) is a mentorship program committed to the support and development of women and non-binary individuals across all levels within the Whiting School of Engineering and School of Medicine. WMW aims to **pair undergraduate students with alumni and MD/grads.**

Application deadline: 11:59pm, September 13th

Undergraduate students apply [here](#).

Alumni/MD/graduate students apply [here](#).

More information can be found [here](#).

HBN-CASSS Biotech Mentorship Program

The Hopkins Biotech Network is pairing with the **CASSS Global community** of biopharmaceutical professionals to offer a unique mentoring experience. **This program offers a 3-month, one-on-one opportunity with a professional in the biotech industry.**

Eligibility: The program is open to all Masters, Ph.D., and Post-doc trainees.

Application deadline: Noon, September 12th

Apply [here](#).



The Intersection of Art and Medicine

The Intersection of Art & Medicine is a virtual panel discussion that **will discuss the intersection of creativity and healthcare and elaborate on how artistic expression can help patients navigate illness, manage pain, and promote healing. The panel will discuss how medical education now encourages students to pursue artistic outlets to manage stress and recharge.**

Register [here](#).

Time: **6:30pm, September 11th**

Visualizing Science

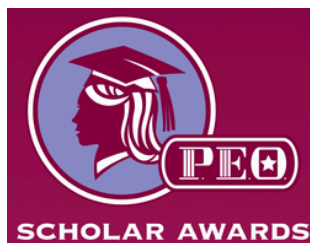
Project Bridge with support from the Doctoral Life Design Studio, the Department of Neuroscience and the Kavli Institute prepared a series of free online workshop focusing on non-written science communication, with **tips on how to effectively and efficiently deliver your scientific message visually. Learn about principles of graphical excellence, analog and digital tools, how to make a logo, and more!**

Register [here](#).



P.E.O. Scholar Awards (PSA)

The P.E.O. Scholar Awards (PSA) was established in 1991 to provide substantial merit-based awards for women of the U.S. and Canada who are pursuing a doctoral-level degree at an accredited college or university. The maximum award amount is \$25,000.



Check it out [here](#).

East Baltimore Food Pantry

Hopkins Food Pantry at East Baltimore is open. It is a student-volunteer run initiative open to all Johns Hopkins faculty, staff and students.

Location: **Bloomberg School of Public Health (BSPH) W1600**

Please bring reusable shopping bags! Follow them on Instagram for the latest updates.





Events in Baltimore

Bromo Art Walk

This multi-block, multi-sensory night on the town showcases the Bromo Arts District in all its glory: open galleries, live performances, imaginative projects, and in-person engagement. Experience the collective energetic output of 30+ venues and 100+ artists, all within an easy wander of wherever you choose to start.

Time: 1-5pm, September 11th
Location: 218 W. Saratoga Street (multiple locations)

Check it out [here](#).



Friday Nights Live

Every fourth Friday, enjoy live music, drinks, and a rotating lineup of food and artisan vendors in Downtown's Center Plaza for Friday Nights Live. Enjoy a free outdoor concert with summertime sounds from The Vibe, drinks from Chase It Bartenders, and complimentary beer from Guilford Hall while supplies last. A variety of food and artisan vendors will be on site offering goodies.



Time: 5-8pm, September 27th
Location: 10 Hopkins Plaza

Check it out [here](#).

Student Resources

*requires a Hopkins Groups Login

GSA Resources

- [The GSA Website](#)
- [Upcoming GSA Events *](#)
- [GSA Student Spotlight](#)
- [General Body Meeting Information](#)
- [GSA's Conference Travel Awards](#)
- [GSA's Subsidized On Campus Parking](#)
- [Allgrad Listservs](#)
- [GSA's Private Student Room Reservations](#)
- [GSA's Policies and Procedures](#)
- [Our Advocacy Work](#)
- [Past GSA Newsletters *](#)
- [GSA Student Group Forms](#)
- [GSA Reimbursements Form](#)
- [OGBE Laptop Loaner Program Application](#)

Research Support Resources

- [JHU ReVison Editors](#)
- [Funding Opportunities](#)
- [Core Facilities](#)
- [Poster Printing Options](#)
- [Animal Room Access *](#)
- [Graduate Course Catalog](#)
- [SOM Policies and Procedures](#)
- [Professional Development](#)

Physical and Mental Health Resources

- [UHS - Primary Care](#)
- [UHS - Mental Health Resources](#)
- [Student Disability Services](#)
- [On Campus and External Mental Health Resources](#)
- [Family & Caregiving Programs](#)
- [Hopkins Wellness Resources](#)

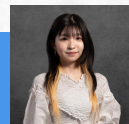
On Campus Resources

- [Biomedical Odyssey Blog](#)
- [Hopkins Biotech Podcast](#)
- [Campus Maps](#)
- [Food and Dining](#)
- [Parking and Transportation](#)
- [Library Services](#)
- [Emergency Alerts](#)
- [Campus Security](#)
- [Perks at Work](#)
- [LifeMart - How to create an account](#)

Other Resources

- [On Campus Room Reservations](#)
- [Housing Resources](#)
- [Tax and Finance Resources](#)
- [Notary](#)
- [Voter Registration](#)
- [COVID 19 Resources](#)
- Jury Duty Exemption - Email medreg@jhmi.edu

Stay Connected! Follow us on our Socials!



Authored By
Yang Zhao