



Monthly Newsletter

JOIN OUR LINKEDIN GROUP!

Graduate Coating Ceremony



In this Newsletter

Monthly Welcome Message

Upcoming GSA Deadlines

GSA's Top News of the Month

Upcoming GSA Events

Upcoming Events

GSA's Monthly Spotlight Winners

Student Opportunities

Links to Important Resources

Event Features?

Would you like your groups event to be featured in our Newsletter?

Email us at gsa@jhmi.edu

Halloween Happy Hour



COSTUME CONTEST!

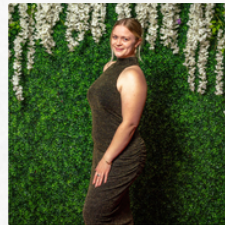


GSA Executive Board Announcement



JIAXIN GE

Current role:
Past-President



HANNAH MOORE

Current role:
President

Jiaxin is graduating this month and can no longer serve as GSA president once she graduates.

We had two voting options:

1. Our president-elect Hannah Moore will take over as GSA president and serve out the rest of this term and next year.
2. Hannah Moore will take over as GSA president and serve out the rest of this term. We will elect a new president-elect now and that person will serve as president next year.

Votes determine that Hannah Moore will serve out for 1.5 years total.



Upcoming Deadlines

January Travel Awards

Do you have a conference coming up and would like some financial assistance for your travel? Make sure you apply for the Fall Travel Award! Applications are due January 15th!

The Spring Application cycle covers conference travel between the dates of January 15th and March 31st.

[Go to our website to apply!](#)

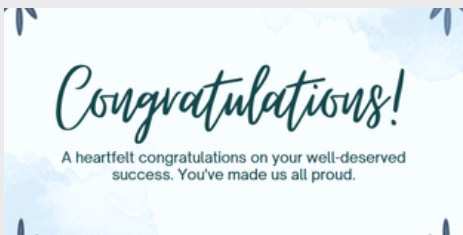


Nov Student Spotlight

Have you or a peer recently achieved something amazing? Let us know! **You could win a \$25 gift card to Amazon or Target and get featured on our website and socials!**

Each month the GSA's Director of Administration sends out an email with the link to the award application! The application cycle is open for the two weeks prior to the next GBM. Once the application closes, the Director of Administration anonymizes each response and formats the submissions in a new survey which is sent to the GSA Council. The council votes on the anonymous submissions.

[Info and nomination link can be found on our website!](#)



GSA's Top News of the Month

Mandatory Flu Shots

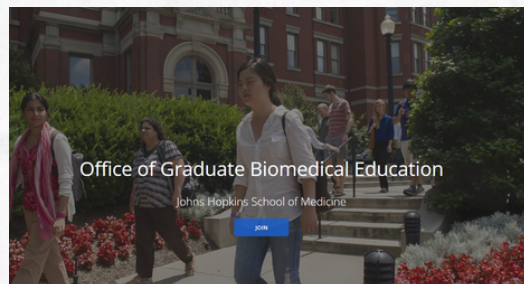


East Baltimore Flu Shot Clinics will be open starting **September 25th to November 15th.**

Deadline to upload your proof of vaccine is **November 15th**

- Find out where you can get your shot by following this [link!](#)

Oct General Body Meeting



We were so happy to have Office of Graduate Biomedical Education (OGBE) to speak during our October General Body Meeting.

If you want to learn more about OGBE, please visit their [website](#).

Check out the [resources](#) provided by OGBE!

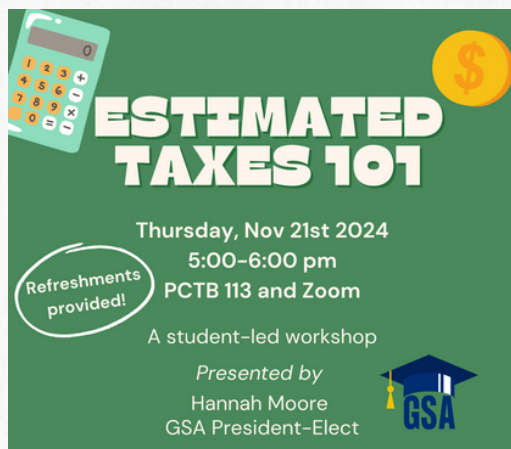
Upcoming GSA Events

Estimated Taxes 101

This is a student-led workshop on estimated taxes. The workshop will be led by Hannah Moore and self-taught student tax expert. The workshop will cover what estimated taxes are, how to pay them, example calculations based on the stipend, how to read your paystub and more! Information for international student taxes will also be covered (note: most international students will not need to pay estimated taxes).

Time: 5:00 - 6:00 PM on November 21st.

Location: PCTB 113 and Zoom



GSA LinkedIn Group

Join our LinkedIn Group to stay updated about our upcoming events and get some new friends!



Thanksgiving Happy Hour

We will have crafts (make your own turkey), beverages (alcoholic and not), and Empanadas from Poyoteca! Please RSVP at the [link](#) or QR code below or on the flier.

Time: November 19th at 5:30 PM
Location: PCTB 113





Upcoming Events

OGBE Open House

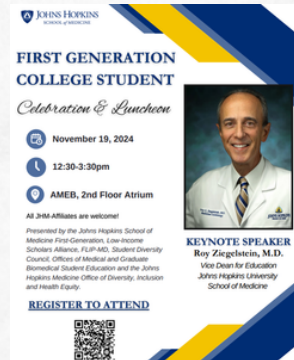
You are all invited to join the Office of Graduate Biomedical Education (OGBE) for a fun fall themed **Open House on Tuesday, November 12th 2-4pm in the OGBE Suite (6th floor of the 1830 Building)**. No need to RSVP - just come join us for a stress break with fall themed snacks and beverages!



First Generation College Student Celebration

Please save the date for the Johns Hopkins School of Medicine First Generation College Student Celebration on November 19th 12:30-3:30pm in AMEB, 2nd floor atrium. The program will feature keynote speaker, Dr. Roy Ziegelstein, Vice Dean for Education.

Register [here](#).



Christmas Village in Baltimore

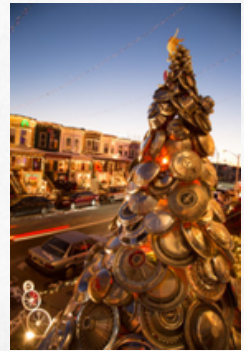
Each year West Shore Park in the Inner Harbor transforms into **an authentic German Christmas market!** Starting from Thanksgiving and running until Christmas Eve, enjoy dozens of local and international vendors selling handmade gifts, and traditional German food and drinks such as bratwurst, schnitzel, sauerkraut and glühwein.

Time: November 23 - December 2024, 2024
Location: Waterfront along the Baltimore Visitor Center



Miracle on 34th Street

The holiday cheer in Baltimore spreads throughout neighborhoods like **Hampden** where you can experience the "Miracle on 34th Street" lights and decorations that pop up starting the Saturday after Thanksgiving and stay on until New Year's Eve. Learn more about the history of the display [here](#), which was started by a local couple over 70 years ago. During your visit, try to spot the crowd favorites such as the hubcap tree or the bicycle wheel snowman.



Inner Harbor Ice Rink

Grab your ice skates (or a rental) and practice your triple axel at the outdoor ice rink in the **Inner Harbor**. Throughout the season check the calendar for special appearances and celebrations. The ice rink is located at the top of the Amphitheater in between the Harborplace Pavilions, overlooking the water. This year, the **Inner Harbor ice rink** runs from **November 9 to January 20**, and is open day and night with special hours around the holidays.

Holly-days at the Maryland Zoo

Celebrate the season's magic with your favorite animals during **Holly-Days** at the Maryland Zoo in **Druid Hill Park**, held on the weekends in November and December. Get to know the species that call Baltimore home while enjoying holiday crafts, delightful carolers, photo ops, special appearances from the Grinch of Zooville, Elsa and Anna, and many more!

Student Opportunities

SHIFT Program

SHIFT Program is a 9-month program designed to assist PhD students in biomedical sciences develop skills needed to launch and sustain a successful biomedical research career.

This program is available to PhD students in biomedical research programs across the US, with all costs covered by an NIGMS R25 grant. Apply [here](#).

Application deadline: Jan 31st, 2025

SHIFT PROGRAM
SHORT COURSE IN TRANSFERABLE SKILLS TRAINING



ABOUT THE PROGRAM
The SHIFT Program is a 9-month program designed to assist PhD Graduate Students in Biomedical Sciences with developing transferable skills needed to launch and sustain a successful biomedical research career.

PROGRAM GOALS

1. Increase student awareness and development of transferable skills needed to translate into their 1st job with confidence.
2. Provide a practicum experience for participants to hone skills development.
3. Develop and implement an individual development plan to prepare for a career that aligns with their skills and interests.
4. Identify career options that complement student strengths identified by self-assessments.

DURATION
Nine month program beginning March 2025. You must be able to commit to monthly meetings, the in-person short course offered June 9-13, 2025 in Washington, DC, and annual follow-up meetings @ summer.

BENEFITS

- Increased Confidence and Self-Awareness
- Improved Business Skills
- Career Marketing and Promotion
- Sustained Peer Network
- Better Understanding of Skills Needed for Success

APPLICATION
OPENS: October 1, 2024
DEADLINE: JANUARY 31, 2025

REQUIRED DOCUMENTS:

- Resume
- Personal Statement
- CV/Resume
- PhD Director Recommendation

SCAN THE QR CODE BELOW TO APPLY



CONTACT BRANDON HARRIS AT BRHARRIS@BMSHC.JHU.EDU FOR MORE INFORMATION

U.S. Immigration and Employment Options

Are you an international scholar at Hopkins looking to learn more about CPT/OPT, temporary visas and permanent residency?

From November 2024 to June 2025 the **Office of International Services** at JHU will be hosting a series of informational sessions and webinars with immigration experts.







U.S. IMMIGRATION AND EMPLOYMENT OPTIONS



October GSA Student Spotlight Winners



Kin Israel Notarte

Pathobiology

Recently, Kin's paper exploring the risk factors associated with Long COVID development was selected as one of the Journal of Clinical Medicine Hot Papers in 2024. Additionally, Kin published last July a first-author review in Frontiers in Immunology, discussing the role of autoantibodies in Long COVID development. To date, Kin's published works have accumulated over 1,600 citations, and Kin has achieved an H-index of 22



Stephen Brown

Pathobiology

In the last month, Stephen published his first first author paper, submitted a huge second author paper, submitted his first grant, and had his second thesis committee meeting! On top of that, he still had time to sit on mock exams for his classmates and has been a huge support to his labmates.



Student Opportunities - Continued

JHMAA Grant Program

Each applicant may request up to \$1,500. Please, be clear and concise in your application, so the JHMAA understands your project and goals. You may select this category when filling out the grant application.

Submission deadline: Nov 15th
Apply [here](#).



JHU Financial Aid Survey on Living Costs

Johns Hopkins University values the experiences of our students living on and off campus. To understand your student experience better and ensure that we support you in the best way possible, we are asking students to participate in the Fall 2024 JHU Financial Aid [Survey](#) on Off-Campus Living Costs.

Deadline: Nov 29th

Student Resources

*requires a Hopkins Groups Login

GSA Resources

- [The GSA Website](#)
- [Upcoming GSA Events](#) *
- [GSA Student Spotlight](#)
- [General Body Meeting Information](#)
- [GSA's Conference Travel Awards](#)
- [GSA's Subsidized On Campus Parking](#)
- [Allgrad Listservs](#)
- [GSA's Private Student Room Reservations](#)
- [GSA's Policies and Procedures](#)
- [Our Advocacy Work](#)
- [Past GSA Newsletters](#) *
- [GSA Student Group Forms](#)
- [GSA Reimbursements Form](#)
- [OGBE Laptop Loaner Program Application](#)

On Campus Resources

- [Biomedical Odyssey Blog](#)
- [Hopkins Biotech Podcast](#)
- [Campus Maps](#)
- [Food and Dining](#)
- [Parking and Transportation](#)
- [Library Services](#)
- [Emergency Alerts](#)
- [Campus Security](#)
- [Perks at Work](#)
- [LifeMart - How to create an account](#)

Research Support Resources

- [JHU ReVison Editors](#)
- [Funding Opportunities](#)
- [Core Facilities](#)
- [Poster Printing Options](#)
- [Animal Room Access](#) *
- [Graduate Course Catalog](#)
- [SOM Policies and Procedures](#)
- [Professional Development](#)

Physical and Mental Health Resources

- [UHS - Primary Care](#)
- [UHS - Mental Health Resources](#)
- [Student Disability Services](#)
- [On Campus and External Mental Health Resources](#)
- [Family & Caregiving Programs](#)
- [Hopkins Wellness Resources](#)

Other Resources

- [On Campus Room Reservations](#)
- [Housing Resources](#)
- [Tax and Finance Resources](#)
- [Notary](#)
- [Voter Registration](#)
- [COVID 19 Resources](#)
- Jury Duty Exemption - Email medreg@jhmi.edu

Stay Connected! Follow us on our Socials!



Authored By
Yang Zhao